

CAST IRON ROOM SEALED BOILER

EVOLUTION EV HFM OD FOR OUTDOOR INSTALLATIONS

HIGH PERFORMANCE
STAINLESS STEEL CONDENSER
CAST IRON HEAT EXCHANGER
POPYPROPYLENE FLUE OUTLET
COMBI BOILER



The most advanced technology
at the most reasonable price

DOMUSA TEKNİK responding to the market needs, regarding savings, ecology and ease of use and installation has developed a new range of high performance oil boilers, for outdoor installations achieving space savings on the inside of the house.

SAVINGS

The boiler's high efficiency, certified according to European ERP directive, with a A rated energy qualification, guarantees the lowest fuel consumption in its category.

SILENT

The effective acoustic isolation of the body and the boiler housing, as well as the use of an airtight burner, converts this boiler into one of the quietest on the market.

MODULATING DHW PRODUCTION

Evolution EV HFM OD boiler is equipped with a modulating DHW production system which lets us stabilize the DHW temperature and adjust the selection with the dial on the control panel, independently of the necessary water flow and the temperature of the incoming cold water at any time.

The modulation also allows the continuous adaptation of the power of the boiler and the requirements of hot water

consumption at any time, letting the boiler work at lower temperatures. This way, cold returns can be achieved and therefore low smoke temperatures even for producing hot water taking advantage of the latent heat to reduce consumption.

CAST IRON HEAT EXCHANGER

The heat exchanger of the boiler is made of cast iron which ensures its long life.



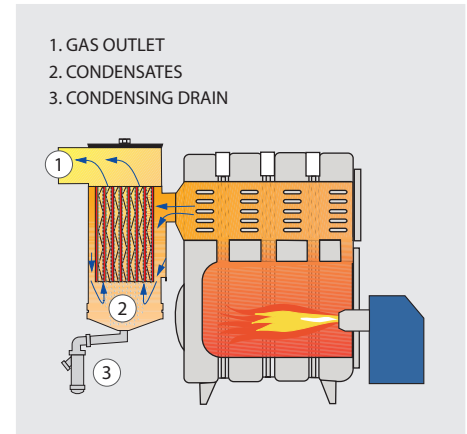
EVOLUTION EV HFM OD



ECOLOGICAL

EVOLUTION EV HFM OD permits the reduction of contaminating CO₂ emissions, contributing to the reduction of the greenhouse effect, thanks to the condensation technology which takes advantage of the condensation effect, it is necessary to reduce the temperature of the combustion gases under the dew point.

The condenser is where the temperature reduction of the gases takes place. This condenser is specially designed to avoid unburned particles from the combustion sticking to the exchanger surface in the condenser, thus reducing maintenance costs.



EASE OF USE

Ease of use has been a priority in the design of this boiler. As a result, the boiler comes with a highly intuitive control panel.

The control of the boiler is carried out with an electronic system which offers advantages of safety and working. Among these advantages we can highlight:

Water pressure safety system:

Avoids boiler breaks because of lack of water.

Pump anti-blocking system:

It reduces the maintenance of the circulation pumps

Anti-inertia system:

It has a post circulation system to prevent boiler overheating.

Anti-freeze system:

When the temperature of the boiler goes below 6° C , the boiler is activated even if it is switched off, to avoid problems in the system due to freezing.



REMOTE CONTROL (OPTIONAL)

LAGO FB OT + Room sensor

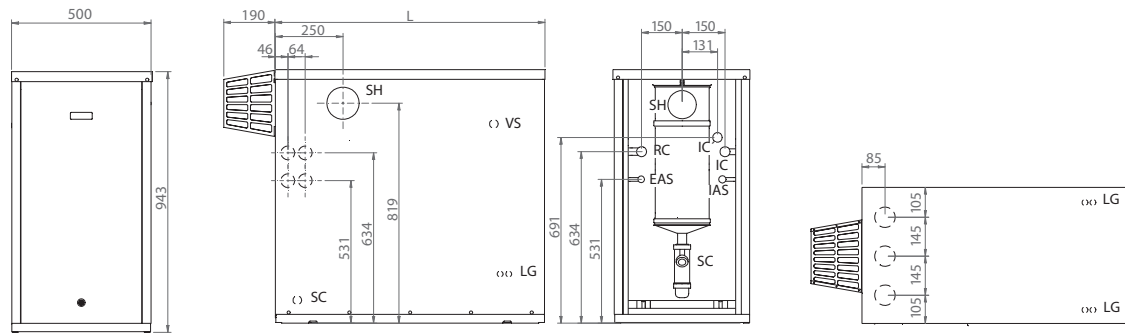
The Lago FB OT + is a room remote control which allows the remote control of the boiler.

It is positioned in the same place that we normally install the thermostat, which apart from controlling the room temperature we can:

- See boiler alarms.
- Adjust the working temperature.
- Adjust the DHW working temperature.
- Modulate the power of the boiler.
- Program the time of the boiler and the DHW.
- Connect with cable.



DIMENSIONS

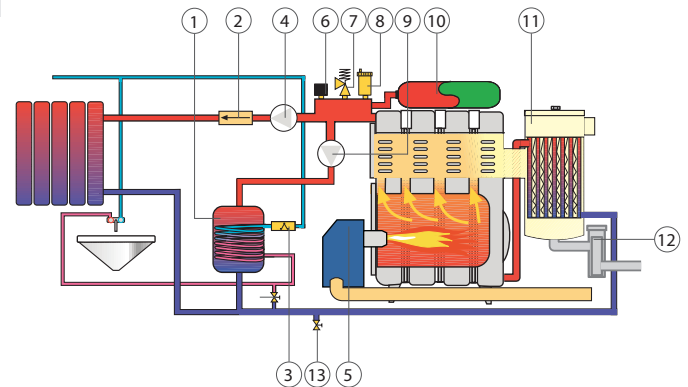


Model	IC, RC	EAS, IAS	L
EVOLUTION EV HFM 30 OD	3/4" F	1/2"	1000
EVOLUTION EV HFM 40 OD	3/4" F	1" 1/2"	1100

IC: Heating outlet.
 RC: Heating return.
 EAS: Domestic cold water Inlet.
 IAS: Domestic hot water outlet.
 V: Safety relief valve.
 SH: ø100 Smoke outlet.
 SC: Condensation outlet.

EQUIPMENT

1. Coil Heat Exchanger	13. Drain valve
2. Heating check valve	Telephonic relay connection
3. Flowswitch	DHW flow limit
4. Heating pump	Pump anti-blocking
5. Sealed oil burner	Minimum pressure limit
6. Transductor de presión	Anti-freeze
7. Safety relief valve	DHW Modulation
8. Automatic air vent	OPTIONS
9. DHW pump	E20 remote control (wire connection)
10. Heating expansion vessel	Outdoor sensor for E20
11. Condenser	Flue duct accessories
12. Condensation outlet	



Model	Heating Output KW 50° C / 30° C	Heating Output KW 80° C / 60° C	DHW Production L/Min		Heating efficiency class	DHW efficiency class	DHW profile
	kW	kW	ΔT30°C	ΔT25°C			
Evolution EV 30 HFM OD	30,2	28,7	12,8	15,4	A	A	XL
Evolution EV 40 HFM OD	40,5	38,7	17,8	21,4			XL



HEADQUARTERS & FACTORY
 Bº San Esteban, s/n.
 20737 ERREZIL (Gipuzkoa) Spain
 Tel.: +34 943 813 899
 domusateknik@domusateknik.com
 www.domusateknik.com

WAREHOUSE
 Atxubiaga, 13
 Bº Landeta
 20730 AZPEITIA
 (Gipuzkoa) Spain

